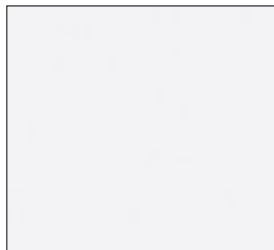


// MATERIALS AND FINISHES MATERIA

This model's doors are 23 mm thick, available in the following finishes.

DOORS

FULL-COLOUR MELAMINE



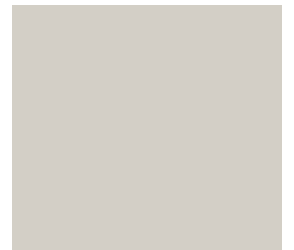
BIANCO CRYSTAL



CHAMPAGNE



ECRÙ



GRIGIO PIOGGIA



CORTECCIA

OAK MELAMINE



TUNDRA



CRETA



FOSSILE



ROCCIA



COGNAC

MELAMINE WALNUT

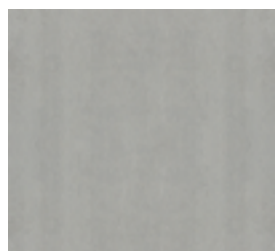


ORZO

CANNELLA

CAFFÉ

MELAMINE CEMENTO



MAGNESIO

POLVERE

PALUDE

SCRATCHED OAK



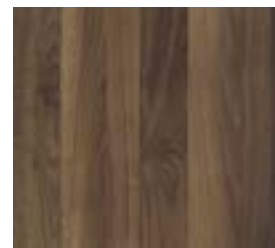
NATURALE

BRONZO

OSSIDO

TORBA

NATURAL WOOD



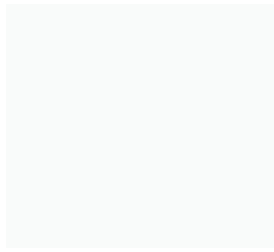
OLMO NATURALE

ACACIA TERMOTRATTATA

ROVERE TERMOTRATTATO

NOCE SCALFITO

FENIX NTM®



BIANCO KOS



BEIGE LUXOR



BEIGE ARIZONA



GRIGIO EFESO



GRIGIO ANTRIM



GRIGIO



GRIGIO BROMO



VERDE COMODORO



ROSSO JAIPUR



CASTORO



CACAO ORINOCO

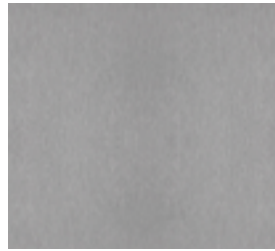


NERO

FENIX NTA



ARGENTO



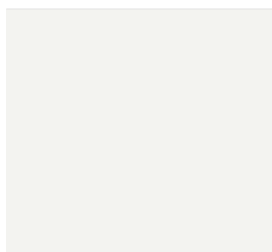
ACCIAIO



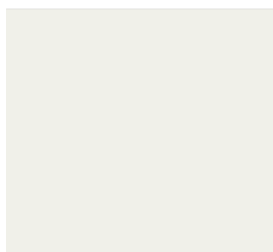
ORO

**MATT, GLOSSY
SUPER MATT,
LACQUERED**

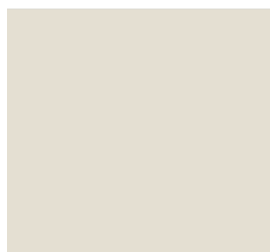
(24 colours)



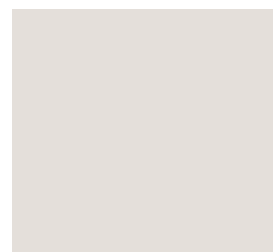
BIANCO RAL 9003



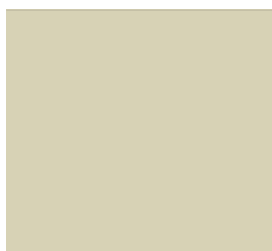
BIANCO



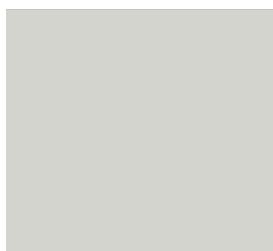
BIANCO SALE



BIANCO GRIGIO 233



SABBIA ORO



GRIGIO NUBE 239



TORTORA



CAPPUCCINO



CAMOSCIO



CORDA



ROSSO CORSA



BLU PETROLIO



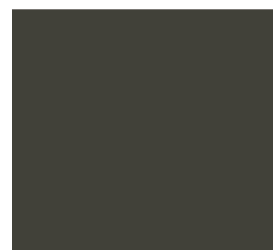
MUSCHIO



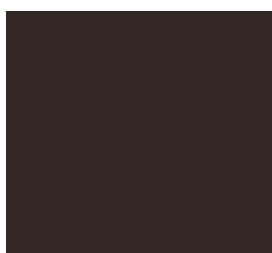
GRIGIO



GRIGIO ARDESIA 7015



VERDE MARRONE



CIOCCOLATO



NERO PROFONDO

STRUCTURES



BIANCO



GRIGIO SABBIA

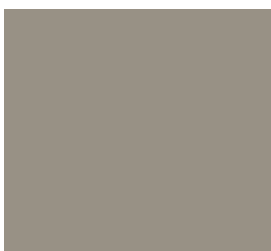


ANTRACITE

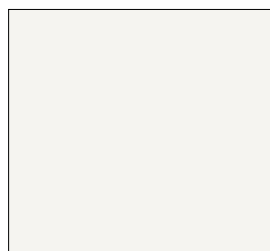
PLINTHS



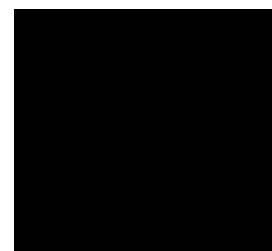
MATT ALUMINIUM



CHAMPAGNE ALUMINIUM



WHITE ALUMINIUM



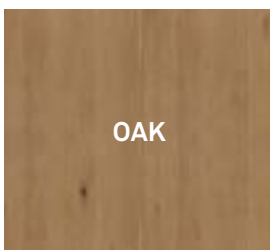
BLACK ALUMINIUM



18 COLOURS
+
RAL LACQUERED

MATT LACQUERED PLINTH IN:

- > 24 DOOR FINISHES
- > RAL COLOURS



OAK

OAK PLINTH IN:

- > 6 VENEERED OAK

Possible differences in lacquered or veneered items are not to be considered as production defects.
They are due to the natural process of elements exposed to domestic light.